

# Professional Ceramic Salt Mill Kit

## PMK-S • PMK-M • PMK-L Kit Features:

- Traditional Styling
- Non-corrosive Components
- Ceramic Grinder
- Available in 3 sizes

## Required Accessories:

- 1-1/2" Forstner Bit
- 1-5/16" Forstner Bit
- 1-1/16" Forstner BitVV
- 15/16" Forstner Bit
- 9" Forstner Bit Extension
- 3 Jaw Drill Chuck
- HD Live Center (60°)



DIAGRAM-A

- 8mm Drill Bit

## Required Wood Blanks: (see Diagram A

- Base Blank: 2-5/16" Min Square ; Length (see below sizes
- Be sure both end surfaces are cut to 90°
- Head Blank: 1-9/16" Long

Boring the Blanks: (see Diagram A)

### BASE

- Mark the center on both ends of the blank. On one end drill a 1-1/2" dia. hole 8mm [5/16"] deep.
- Follow with a 1-5/16" bit. Use the point of the previous hole as a guide. Drill 4mm deep.
- Follow with a 1-1/16" bit. Use the point of the previous hole as a guide. Drill 19mm[3/4"] deep.
- The other end drill a 1-1/8" diameter 12mm[1/2"] deep
- Follow with a 15/16" bit, drill through the blank

### Head:

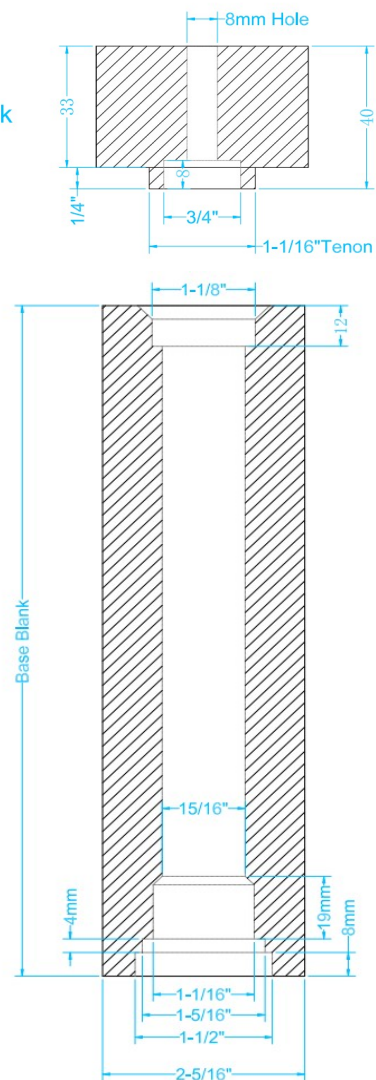
- Locate and mark the center of the blank. Bore a 8mm hole through the blank.

The other end drill a diameter 19mm deep 8mm[5/16"]

Kit Item #: Mechanism Length: Base Blank Sizes(Length):

• #PMK-S:	5"	3-3/4"
• #PMK-M:	6"	4-3/4"
• #PMK-L:	8"	5-3/4"

Head Blank



Head Blank:

- Mount the blank on the lathe between centers. Turn a tenon 1/2" deep 1-1/16" in outer diameter 3/4" inner diameter to fit into the hole in the base blank.

**NOTE: It is recommended to turn both ends at once**

- Insert the tenon into the opening at the upper end of the base blank.
- Mount the 3 jaw drill chuck into the head stock of the lathe. Insert the jam chuck and lock into jaws.
- Mount the wood assembly, recessed end in first over the jam chuck.
- Bring the tail stock forward with the center into the hole. Lock in place.
- Use a wrench to tighten the nut to expand the jam chuck in the hole.
- Tighten and make sure it is safe to turn. (You may choose to turn, sand & polish each separately).
- Turn the wood blanks to a profile of your choice. Sand and finish the wood. Use a food safe polish.

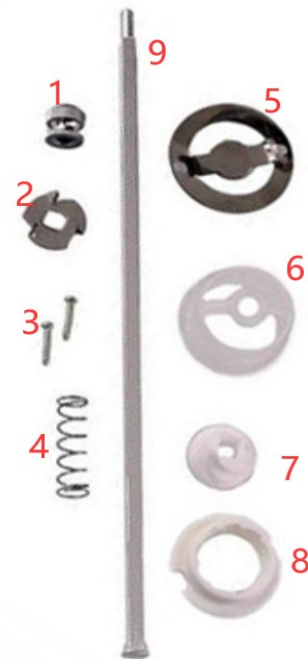
**Assembly**

- Layout parts according to diagram B.
- Mount (press) the drive disc (2) on the head
- Insert Shaft (10) through the bottom of the Cone (7) and (8).
- Slide the spring (4) over the cone(7)(8)
- Slide the Grinder Housing (6) over spring (4).
- Cover the stainless steel disk onto the bottom
- Assembly and secure with Long Screws (9).

Please pay attention to the alignment of the round holes , the tenon and groove

- Slide Head over Shaft (10) and secure with Knob (1)

DIAGRAM-B



Reference photos

